

Additional Genealogy and Local History Databases

These Genealogy and Local History resources are available online outside of the Library's collections:

Genealogy

www.ancestry.com \$

www.genealogybank.com \$

www.worldvitalrecords.com \$

www.fold3.com \$

www.newspapers.com \$



www.cyberdriveillinois.com/departments/archives/databases/home.html

Illinois State Archives Online Databases

will.illinoisgenweb.org Will County Genealogy

www.ilgensoc.org Illinois State Genealogical Society

www.familysearch.org Mormon Family History Website

Local History

www.preservationnation.org

National Trust for Historic Preservation

<http://landmarks.org> Landmarks Illinois

www.willcountylanduse.com

Will County Historic Preservation Commission

www.heritagecorridorcvb.com/will-county/history-landmarks.htm Heritage Corridor

Additional websites continued on back cover

\$- Fee required



Online Map Collections

www.idaillinois.org Illinois State Digital Archives

<http://landplats.ilsos.net>

Illinois Land Plats 1804-1891

<http://isgs.illinois.edu/?q=ilhap>

Illinois Historical Aerial Photographs

<http://images.library.uiuc.edu/projects/maps>

University of Illinois Historical Maps Online

www.chicagoinmaps.com/historicmaps.html

Chicago In Maps

www.geocommunicator.gov/blmMap/MapLSIS.jsp

Bureau of Land management modern land survey maps

www.davidrumsey.com David Rumsey Map Collection



Plainfield Public Library District

15025 S. Illinois St.

Plainfield, IL 60544

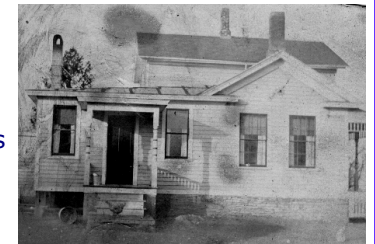
Phone: 815-436-6639

Fax: 815-439-2878

www.plainfieldpubliclibrary.org

Researching Your Home's History @ the Plainfield Public Library

Did you know the Plainfield Public Library can get you started on the road to tracing the history of your home?

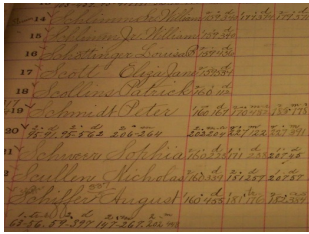


The library has a collection of historic books, newspapers, and records available for your viewing in our Local History Collection.

Still can't find the information you need? Try some of the online resources listed on the back of this brochure.

When all else fails, stop by the Adult Reference Desk and we may be able to offer some alternative suggestions as well.





The Will County Grantor and Grantee Indexes like the one shown here, have been digitized and are available online for free. To view Will Co. property owners from 1836-1885 go to: www.idaillinois.org

Electronic & Print Resources Available at the Library

The Plainfield Library has limited original resources for house histories, but these titles will help put you on the right path to more information:



House Histories by Sally Light **929.1 LIG**

A History of Plainfield: Then and Now
LH 977.3 HIS

Plainfield: Postcard History Series
LH 977.3 SMI

Village of Plainfield Rural Structures and Farmsteads Survey **LH 977.3 VIL**

Plainfield's Historic Urbanized Core: An Intensive-Level Survey and Report **LH 977.3PLA**

Plainfield/Joliet City Directories (misc. years)

Plainfield Area Phone Books 1925-1955
(misc. years)

Will County Public Domain Land Tract Sales
LH 977.73 PUB

Farmer's Directory Will & Southern Cook Counties
LH 929.377 PRA

Illustrated History of Will County vols 1-2
by August Maue **LH 977.325 MAU**

History of Will County vols 1-2 by W.W. Stevens
LH 988.325

More information may be available at the Plainfield Historical Society (815) 436-4073

The Following Will County websites can assist you in tracing the history of your property:

www.willcountyrecorder.com
Will County Recorder of Deeds Office

www.willcountysoa.com/search.aspx
Will County Tax Assessor's Office

www.plainfield-township.com/Assessments
Plainfield Township Tax Assessor's Office

www.wheatlandtownship.com/SD/wlt/content/Detail.aspx?ID=6 Wheatland Township Tax Assessor's Office

www.idaillinois.org Will County: Preserving History's Heritage. This website was created by the Plainfield Public Library and the Plainfield Historical Society as part of a grant to digitize a wide range of historic Will County materials including, books, photographs and newspapers.

The three volume alphabetical indexes to Will County property transactions from 1836-1885 were digitized and indexed. These indexes list all transactions recorded by the Will County Recorder of Deed's office by last name and include the volume and page where the original records can be found.



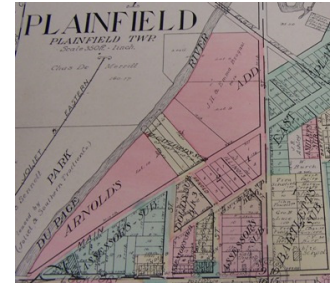
To view the images and learn more about the collections digitized for this grant please visit www.idaillinois.org

Additional sources for House Histories:

Plainfield Historical Society has a newspaper clippings file, photographs and family history files available. Open Saturdays from 1-3 P.M. (815) 436-4073

Will County Historical Society has city directories, records, newspapers and photographs for Will County. Open Wednesday-Sunday 12-4 P.M. (815)838-5080

Plat Books and Maps County atlas and plat book are a great way for locating owners of property that lived outside of an incorporated area. Many of these books have illustrations or photographs of prominent homes and structures. The Library has atlases in print for Will County for 1873 and 1893 plus a digital copy of the 1909 atlas book.



Sanborn Fire Insurance Maps our Library has an online subscription to the digital Sanborn Fire Insurance Co. maps for the state of Illinois. Each map contains layouts for buildings in towns like Plainfield. Each map shows homes, schools, businesses, churches and more.

Local area newspapers include tidbits on what's happening around town including homes being built and renovated, plus who is moving. Obituaries also often provided the address of the deceased.

